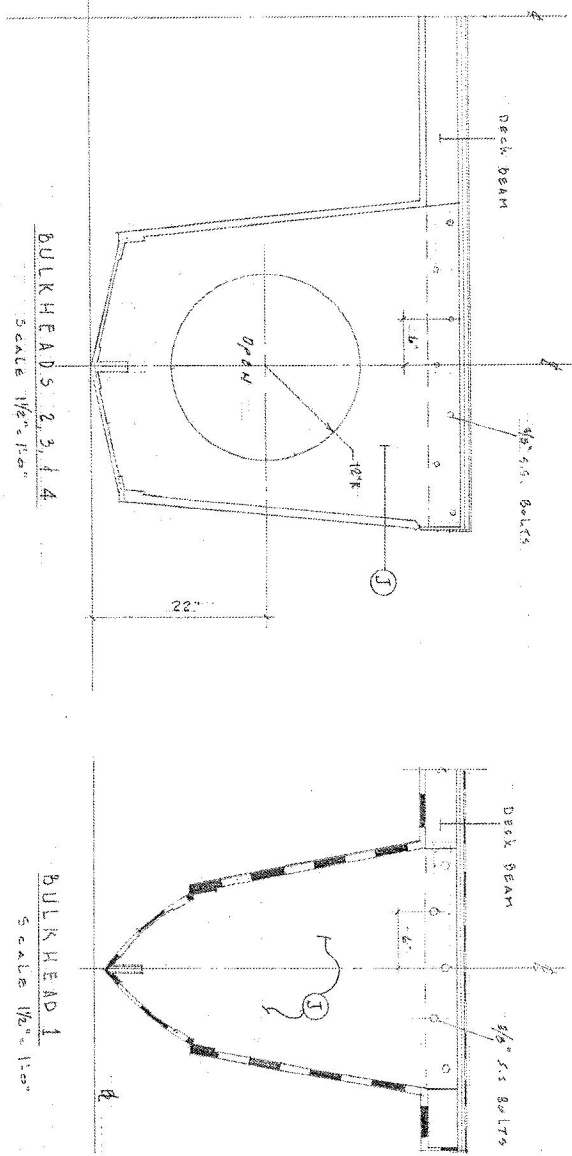


LAMINATION SCHEDULE (B)

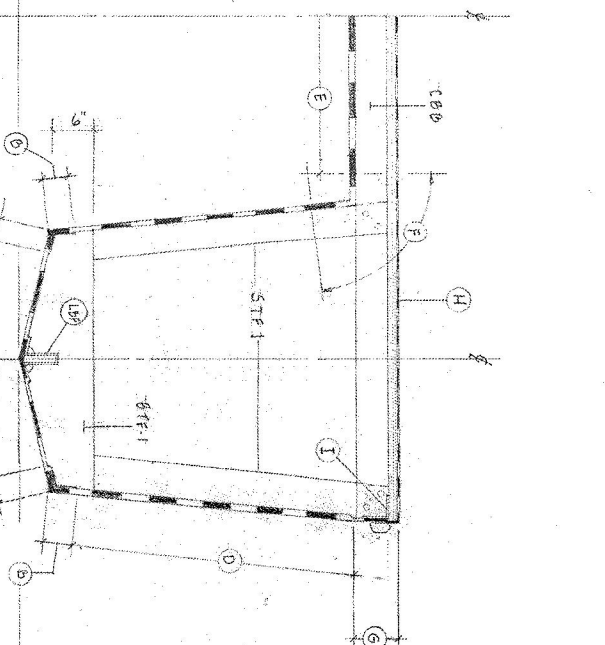
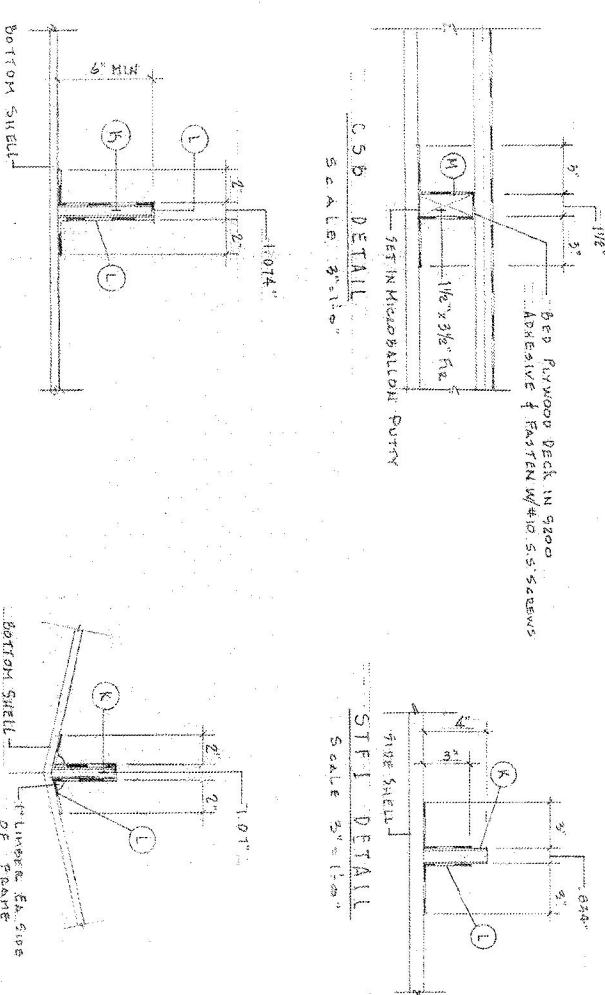
ITEM	LOCATION	LAYUP	TOTAL THICKNESS	OUTSIDE SKIN	INSIDE SKIN	NOTES
(N)	TRANSOM KNEE	2x 2415 OVER 3/4" PLYWOOD	1.018"			
(O)	TRANSOM CORNER KNEE	SAME AS (N)	1.018"			
(P)	CROSS BEAMS @ BOW + STEM	2x 2415 ENCAPSULATE C-FIR				
(Q)	DECK BEAMS TO HULL SIDE	1x 2415	.067"			12" E/W AT EA DECK BEAM EXCEPT WHERE BOLTED TO FRAME OR BHD
(R)	TRANSOM	2x 10 CSM + 4x 2415 + 1x 1.50 PCOM + 1x 1.5" 26 PCF COOSA B0 + 1x 2415	1.44"	.375"	.067"	
(S)	STEM REINF.	1x 10 CSM + 6x 2415	.438"			6" E/W

ALLIANCE CATAMARAN HULL # JMS95001815-HR
 SMALL PASSENGER VESSEL (1)
 INBOARD PROFILE & BOTTOM AND
 SIDE FRAMING PLAN
 DANIEL J. ANDRUE & ASSOC., INC.
 NAVAL ARCHITECTS
 CHATTAHOOCHEE
 SCALE: 3/4" = 1'-0"
 DATE: 15 MAY 2015
 DWG NO.: 045-51



LAMINATION SCHEDULE (A) FROM OUTSIDE OF SHELL TO INSIDE						
ITEM	LOCATION	LAYUP	TOTAL THICKNESS	OUTSIDE SKIN	INSIDE SKIN	NOTES
A	BOTTOM SHELL	20-22 MIL GELCOAT + 10 CSK + 0 X 2415	.96"	-	-	
B	CHINE 3" WIDE	LAYUP (A) + 1.5 CSK + 5/16" Balsa Core + 4 X 2415	1.504"	.562"	.319"	CHINE AT SIDE & CHINE AT BOTTOM
C	CHINE 3" WIDE	20-22 MIL GELCOAT + 2 X 10 CSK + 1 X 2415	.864"	-	-	
D	SIDE SHELL	20-22 MIL GELCOAT + 10 CSK + 1 X 2415 + 1.5 CSK + 5/16" Balsa Core + 1 X 2415	.894"	.142"	.061"	
E	WET DECK	20-22 MIL GELCOAT + 10 CSK + 1.5 CSK + 5/16" Balsa Core + 1 X 2415	.901"	.209"	.061"	
E	HULL SIDE AT WET DECK	LAYUP (E) + 1 X 2415	.968"	.209"	.194"	5" E/W AT JOINT
G	HULL SIDE ABV SANDWICH	20-22 MIL GELCOAT + 10 CSK + 1.5 CSK + 4 X 2415	.949"	-	-	4 1/2" ABV SANDWICH
H	MAIN DECK	20-22 MIL GELCOAT of 2 X 1.5 CSK + 2 X 1/2" PLYWOOD	1.04"	1.04"	-	TOTAL DOWN LAMINATE ON HULL SIDE 2"
I	INSIDE HULL/DECK JOINT	1 X 1808	.052"	.052"	-	5" E/W
I	BULKHEADS	1 X 2415 + 3/4" Balsa Core + 1 X 2415	.884"	.067"	.071"	
R	BOTTOM & SIDE FRAME	1 X 1808 + 3/4" Balsa Core + 1 X 1808	.737"	.056"	.056"	
L	BOUNDARY ANGLE	3 X 1808	.168"	.168"	-	FOR DETAIL, SEE 1 & 15F IS ALSO THE FRAME CAP. (L) IS 3" E/W FOR SHIPS
M	CROSS BEAM CAP & BOUNDARY ANGLE	1 X 2415	.067"	-	-	5" ON WET DECK SHELL

- NOTES:
- 1) 10 CSK = CHOPPED STRAND MAT TH = .045"
 - 2) 1.5 CSK = CHOPPED STRAND MAT TH = .045"
 - 3) 2415 = 21oz 0-90 WOVEN ROVING W/ 15oz CHOPPED STRAND MAT "STITCH MAT" TH = .061"
 - 4) 1808 = 18oz WOVEN ROVING W/ 0.8 oz CHOPPED STRAND MAT "STITCH MAT" TH = .056"
 - 5) Balsa Core is BALTER 5010D, EUP GRANUL Balsa Core, 32 RES. OR EQUAL
 - 6) Fir is C-Fir GRADE DOUGLAS FIR, KILN DRIED.
 - 7) ALL WOOD & PLYWOOD TO BE "HOT" COATED WITH EPOXY PRIMER TO LAMINATION.
 - 8) CEILING TO BE FIBRE REINFORCED TO MIL-R-21007E.



BTF-1 DETAIL
SCALE 3"=1'-0"

LBF DETAIL
SCALE 3"=1'-0"

MID SHIP SECTION
SCALE 1/2"=1'-0"

HULL No. JAB-380010515-HH
 ALLMND 03 CATAMARAN
 SMALL PASSENGER VESSEL (S)
 LAMINATION PLAN & STRUCTURES
 DANIEL J. AVOURE & ASSOC., INC.
 NAVAL ARCHITECTS

TAMPA
 SCALE AS NOTED DATE 15 MAY 2015
 DESIGN No. 15545
 CHATTANOOGA
 DWG. No.
 645-S2