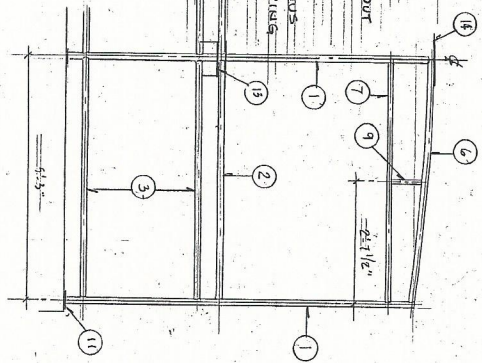
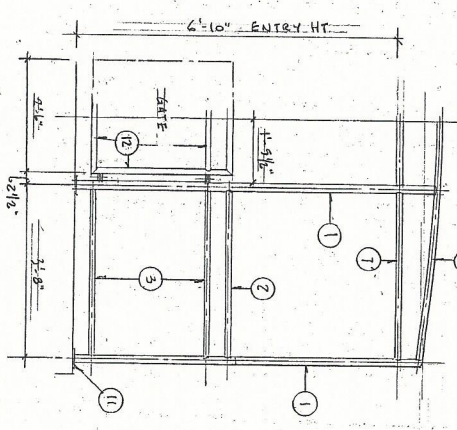


**WELDING NOTES**

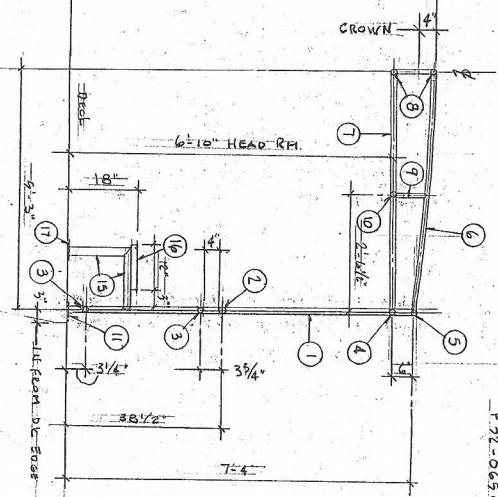
- 1) All welds to be tied on side using 6033 rods or rods x .035 wires.
- 2) All joints to be properly cut, angled & cleaned prior to welding.
- 3) Finished welds to be sound, fused throughout & free from defects.
- 4) All surfaces to be welded to be free of moisture and contamination.
- 5) When fabricating a weld fitting, continuous or intermittent craters fitting by steping is to be prevented to provide a sound ending to each fillet.
- 6) All welded pipe connections to be continuous all around welder tool.



**AFT VIEW**



**FRONT VIEW**



**CANOPY SECTION**

- MATERIALS**
- 1) CANOPY & RAIL STRUCTURES - 1/4" SCH 40 ANNEALED A191 PIPE - LAGO METALS A43-03585A23-M OR EQUAL
  - 2) HANDRAIL - SAME AS (1)
  - 3) RAIL COURSES - 1/4" SCH 40 ANNEALED A191 PIPE - LAGO METALS A43-03585A23-M OR EQUAL
  - 4) LOWER LONGIT. SPOUNERS - (3)
  - 5) UPPER LONGIT. SPOUNERS - (1)
  - 6) LAP CHORD - SAME AS (3)
  - 7) LOWER CHORD - SAME AS (3)
  - 8) GABLE E. LONGIT. - SAME AS (3)
  - 9) STUTTS - 3/4" SCH 40 ANNEALED ALUM PIPE - LAGO METALS A43-03585A23-M OR EQUAL
  - 10) INTERMEDIATE LONGIT. - SAME AS (3)
  - 11) STRUCTURE BRACE - 3" x 3/8" ANNEALED ALUM PIPE - LAGO METALS A43-03585A23-M OR EQUAL
  - 12) GATE FRAME - SAME AS (3)
  - 13) Support for four fuel fill deck - 1/2" ALUM PL.
  - 14) Support for ANGLE IRONS & ALL ROUND LIGHT - 1/2" ALUM PL - 14" x 26" WELD TO BE HARD
  - 15) SEAT SUPPORT FRAME - 1 1/2" x 1 1/2" GALV PIPE - LAGO METALS A43-005585A20-0 OR EQUAL
  - 16) ALUM BENCHER STYLE SEAT - DART EDGE INC. OR EQUAL
  - 17) SEAT FRAME BASE TO ANNEALED ALUM. LAGO METALS A43-005585A20 OR EQUAL

**CANOPY NOTES**

- 1) CANOPY TOP - BOLTER / OWNER SELECTION. METAL, SUNBLENDA OR SEVAPACK LACE TO LOWER LONGIT. @ 1/2" x 3/8" GROMMETS IN CANOPY EDGE @ 4" O.C. PLASTIC COCKETS TO LACE CANOPY TO TO. HARD W/ GROMMETS 3" O.C.
- 2) WEATHER CANVAS BOLTER / OWNER SELECTION. SUNBLENDA OR SUNBELLA MESH. LACE TO TOP & BOLTER OIL COVERS (3) THROUGH GROMMETS @ 4" O.C.
- 3) ALL CORNERS, EDGES AND WEAR LOCATIONS TO BE SURFACED REINFORCED.

ALCHAND 38 CATAHANAN HW JAS 3000 10515 HH  
 SERIAL PASSENGER VESSEL (T)  
 DECK CANOPY & RAILING CONSTRUCTION  
 DANIEL J. NYDOLDES & ASSOC. INC.  
 NAVAL ARCHITECTS  
 TAMPA FLORIDA  
 SCALE 3/8" = 1'-0"  
 DATE 20 JULY 2015  
 DESIGN NO. 15445  
 DWG. NO.  
 645-R1